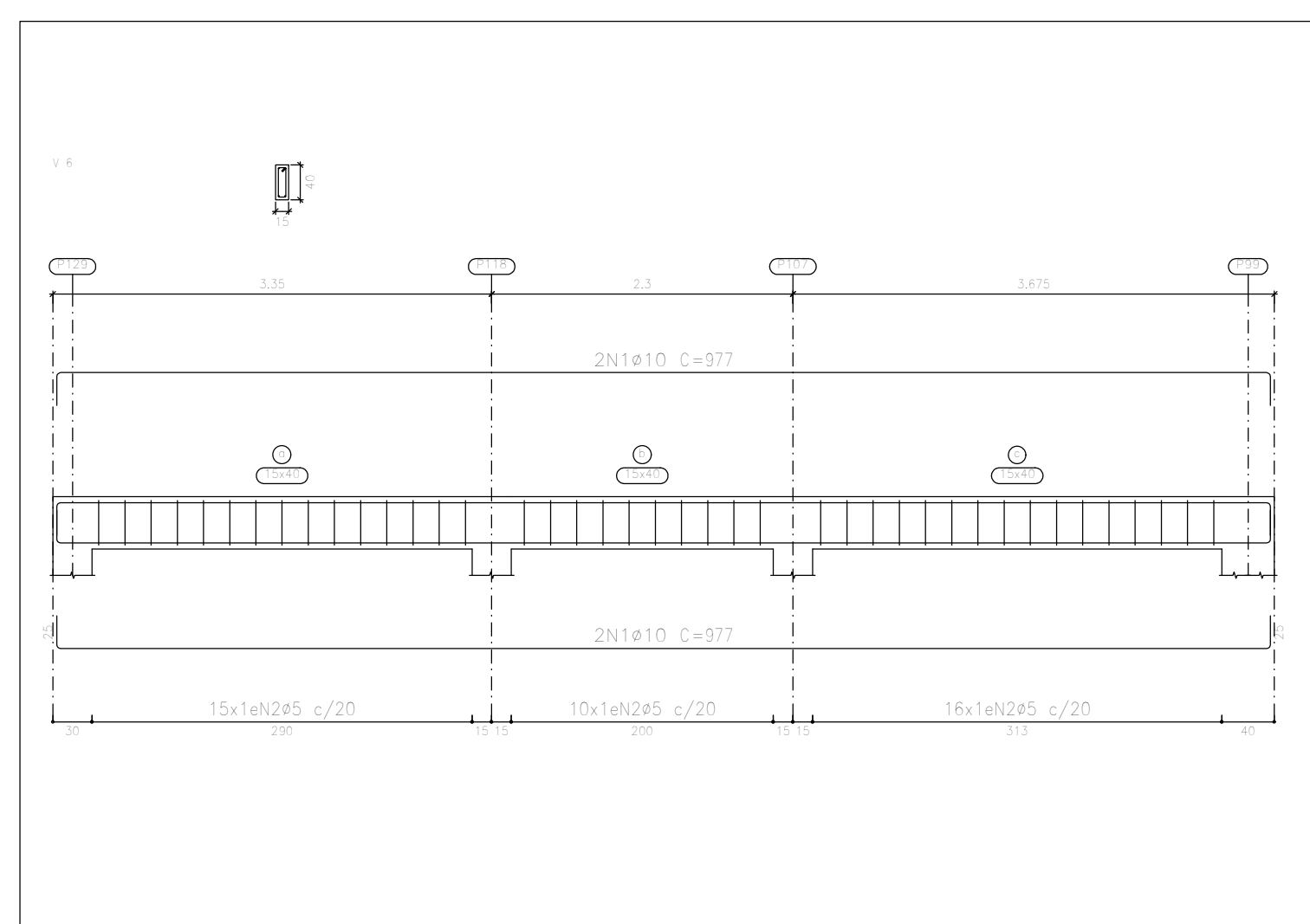
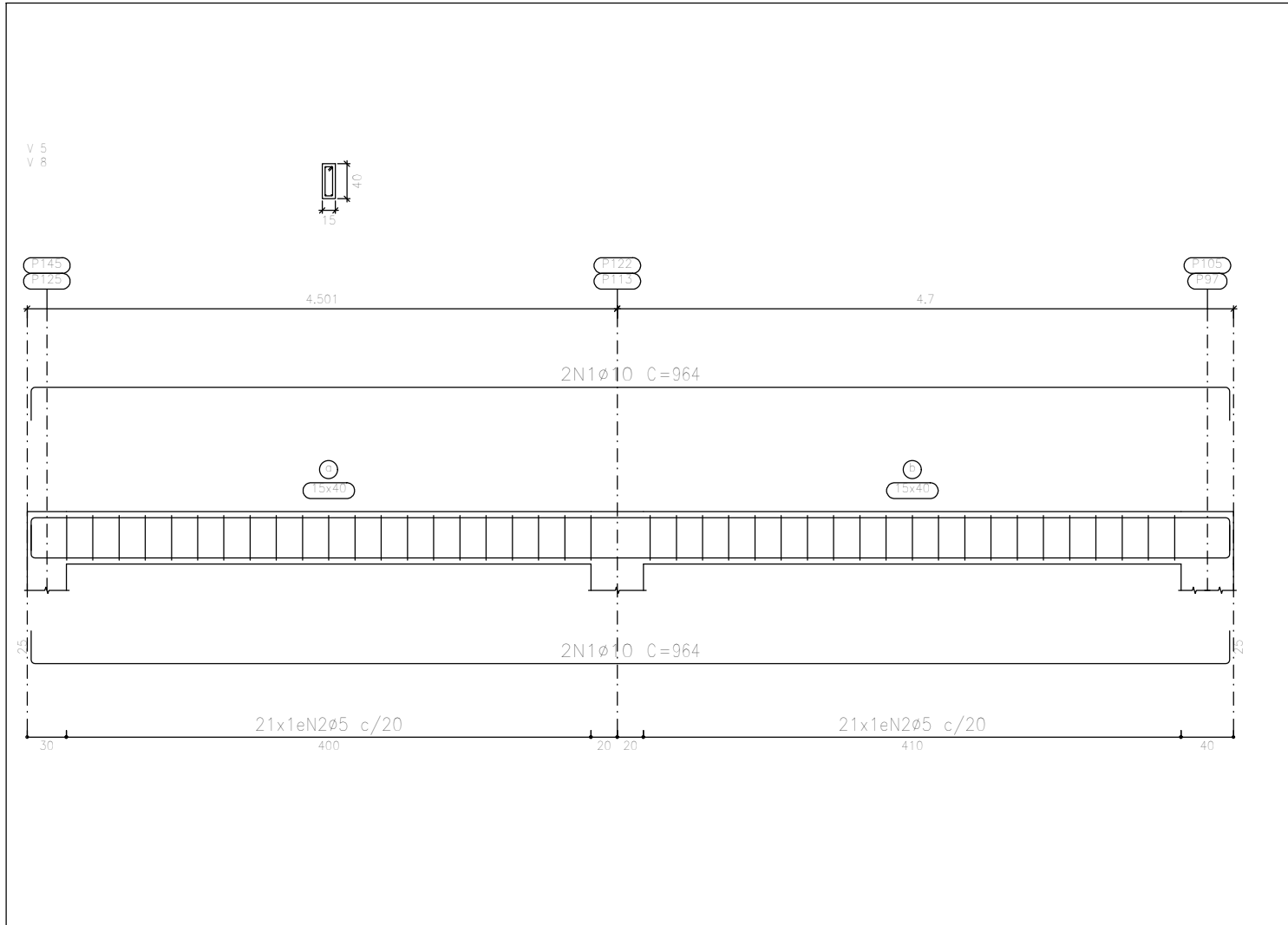
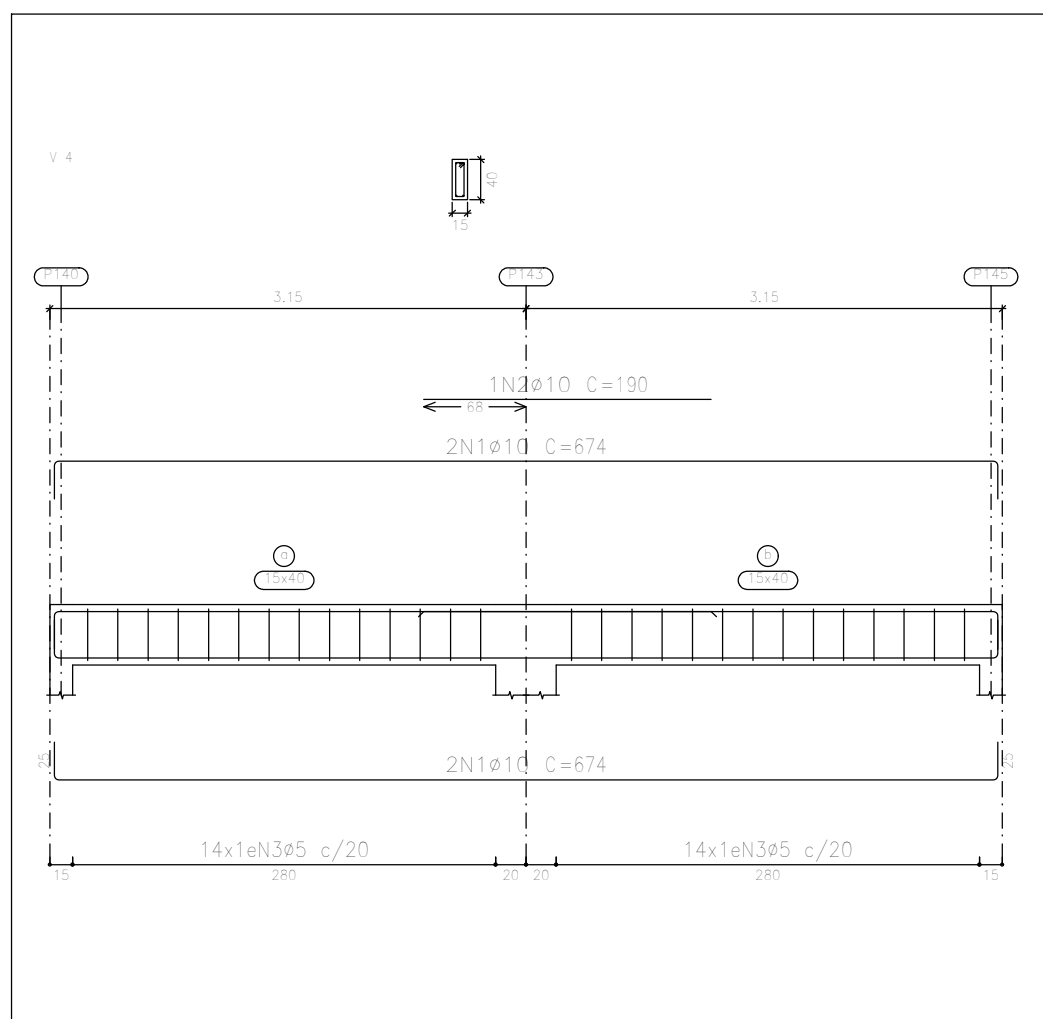
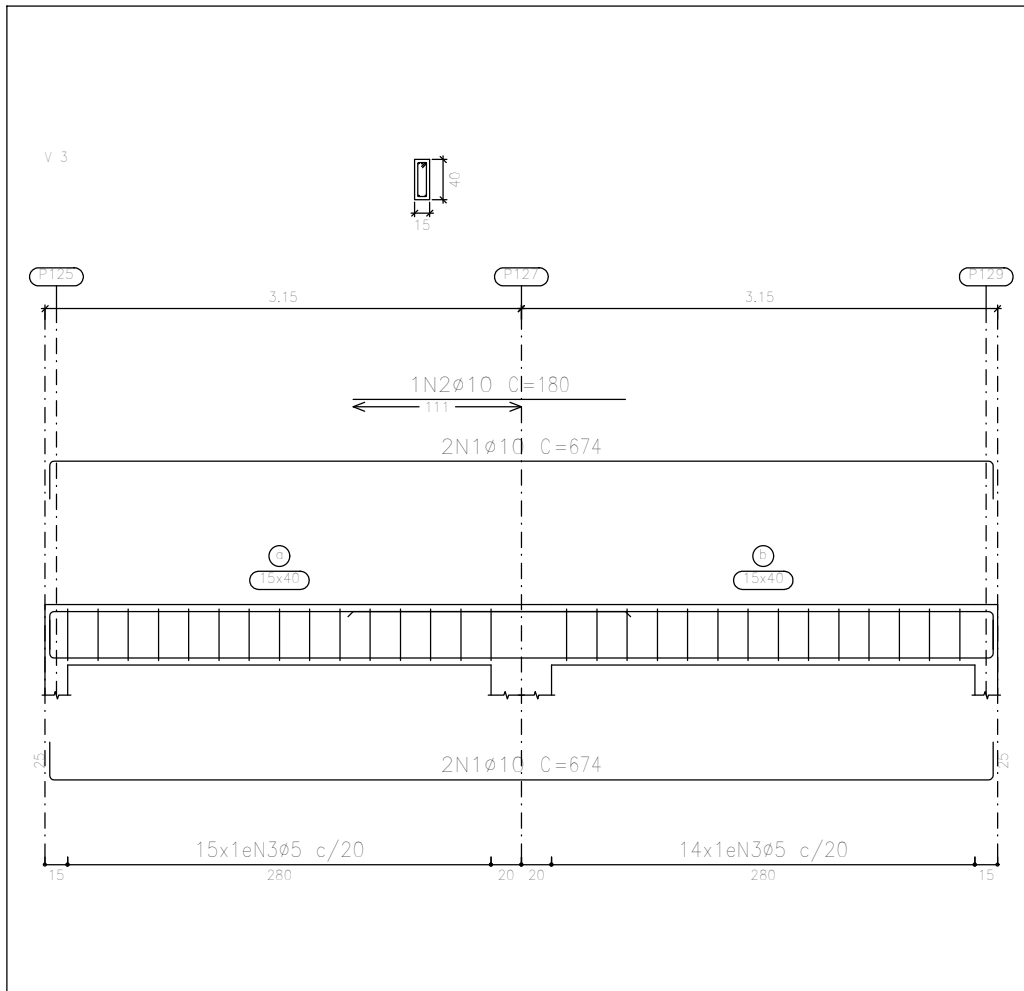
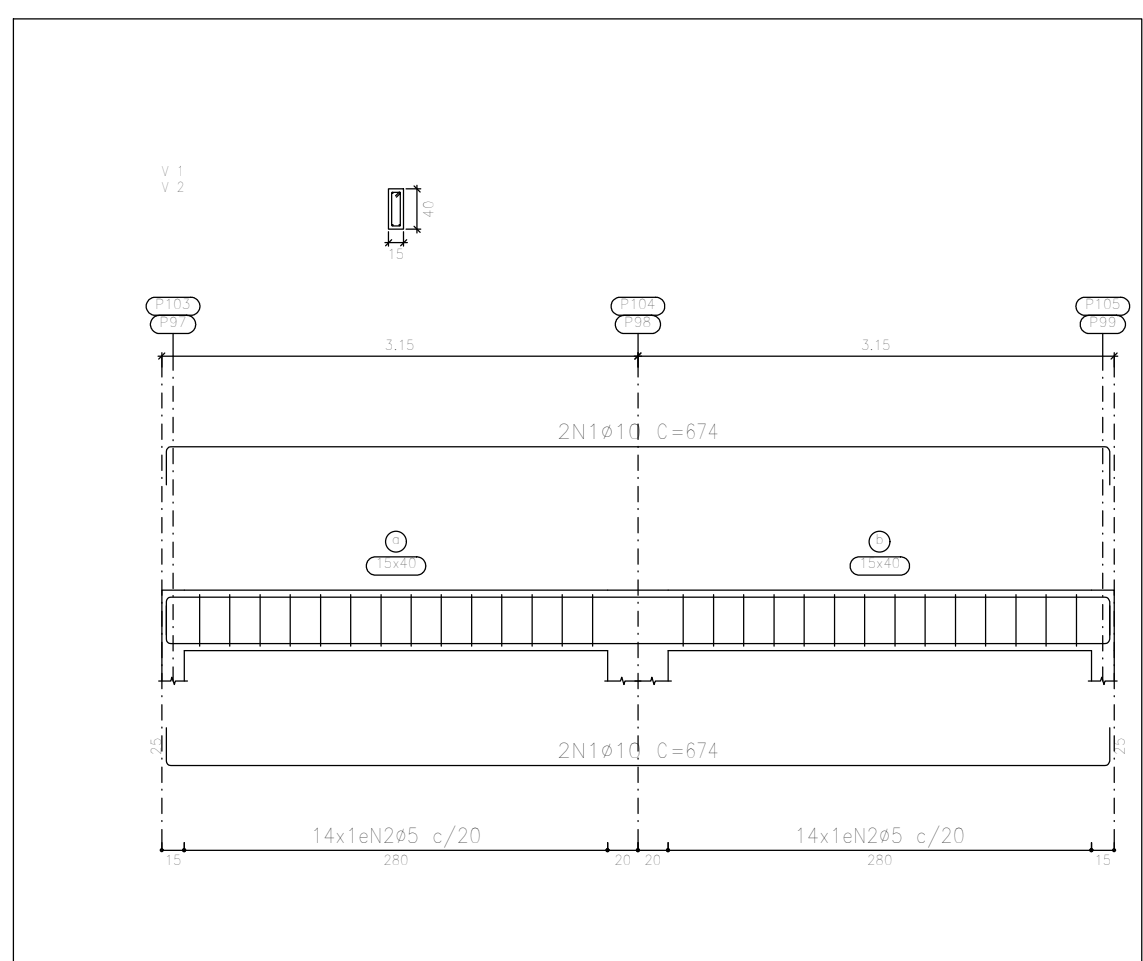
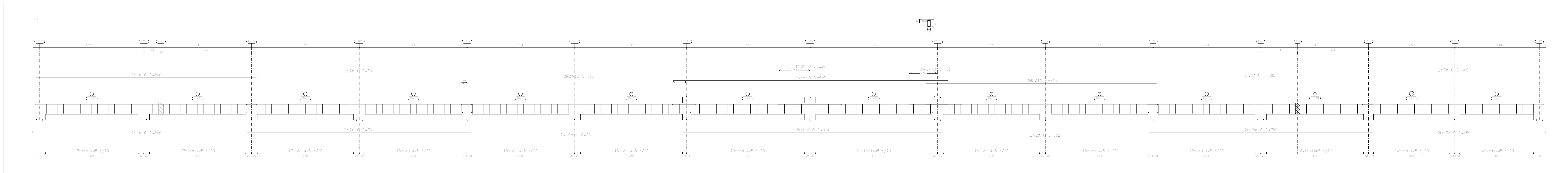



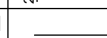

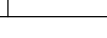
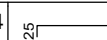
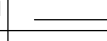


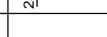


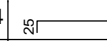


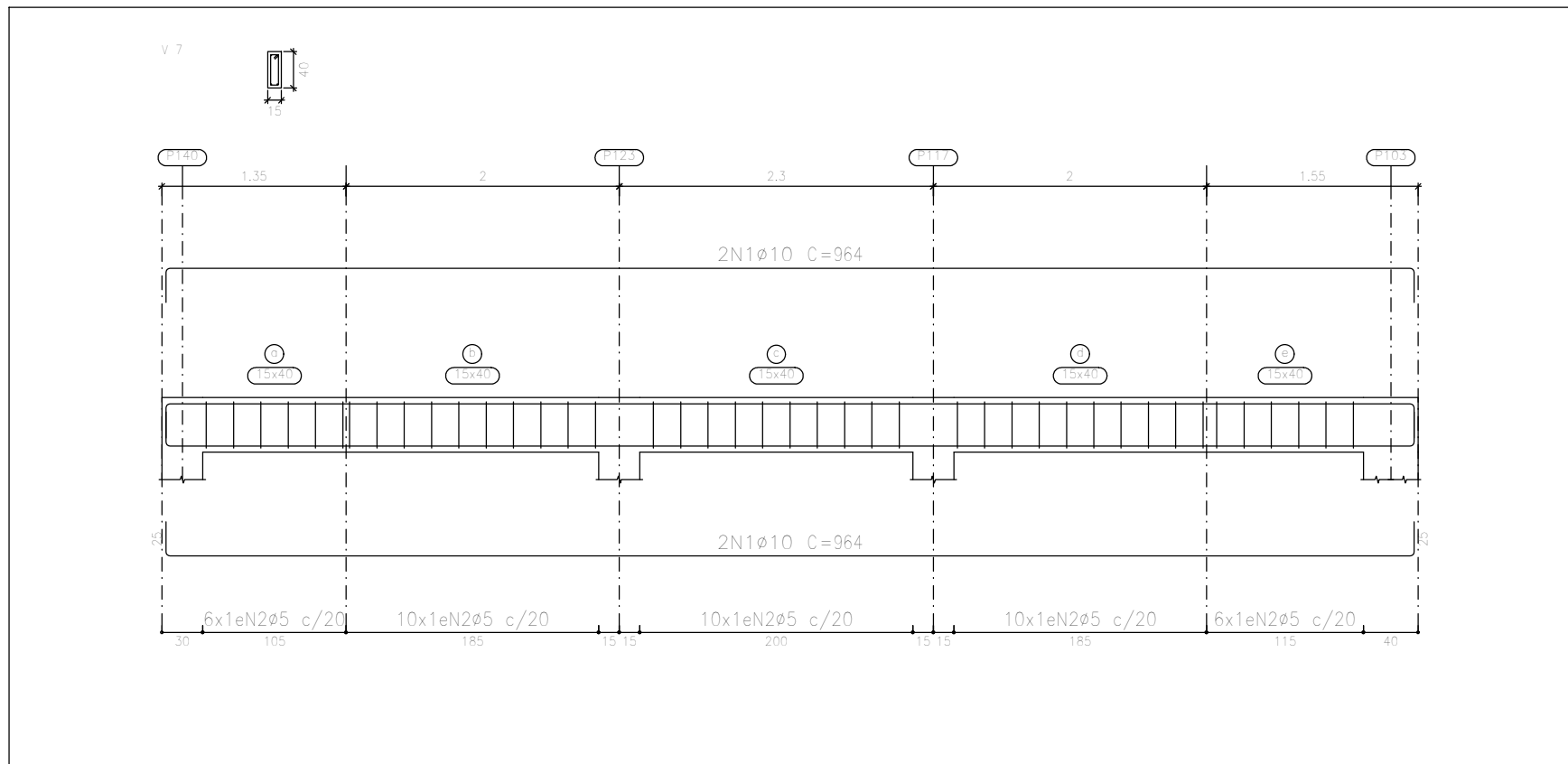
Resumo Aço	Comp. total	Peso+10%	Total
Desenho de vigas	(m)	(kg)	
CA-50 Ø8	8.9	4	
Ø10	2496.7	1692	
Ø12.5	8.1	9	1705
CA-60 Ø5	2581.1	446	446
Total			2151

ARMAÇÃO DAS VIGAS - ELEVÇÃO:7.80 M
PARTE 04/04
ESCALA 1:50

G								
Elemento	Pos.	Dim.	Q.	Esquema (cm)	Comp. (cm)	Total (cm)	CA-50 (kg)	CA-60 (kg)
V 41	1	Ø10	4		806	3224	19	
	2	Ø10	4		791	3144	29.2	
	3	Ø10	2		825	1650	10.2	
	4	Ø10	2		870	1940	12.0	
	5	Ø10	2		915	1630	10.0	
	6	Ø10	2		785	1550	9.8	
	7	Ø10	2		865	1330	8.2	
	8	Ø10	1		220	220	1.4	
	9	Ø10	1		185	185	1.1	
	10	Ø10	2		801	1602	9.9	
	11	Ø10	2		914	1828	11.3	
	12	Ø10	2		789	1578	9.7	
	13	Ø10	2		839	1316	8.1	
	14	Ø5	244		94	22396		36.0
V 42	1	Ø10	2		1090	2180	14.9	
	2	Ø10	2		1010	2010	8.2	
	3	Ø10	2		1084	2168	13.4	
	4	Ø10	2		944	1988	6.1	
	5	Ø6	72		94	6768		10.6
	Total=101%						43.0	11.7
						95	0	51.3
						102	167.9	0
						Total	197.9	51.3



Elemento	Pos.	Diam.	Q.	Esquema (mm)	Comp. (mm)	Total (mm)	CA-50 (kg)	CA-60 (kg)
V 1+V 2	1	Ø10	4		674	2696	16.6	
	2	Ø5	28		94	2632	9.4	4.1
						Total: 1013	18.3	4.5
V 3	1	Ø10	4		674	2696	16.6	
	2	Ø10	1		180	180	1.1	4.1
	3	Ø5	28		94	2720	9.4	4.7
V 4	1	Ø10	4		674	2696	16.6	
	2	Ø10	1		190	190	1.2	4.1
	3	Ø5	28		94	2632		4.1
V 5+V 8	1	Ø10	4		664	3856	23.8	
	2	Ø5	42		94	3948		6.2
						Total: 1013	28.2	6.8
V 8	1	Ø10	4		674	3908	24.1	
	2	Ø5	41		94	3854		6.1
						Total: 1013	26.5	6.7
V 7	1	Ø10	4		664	3856	23.8	
	2	Ø5	42		94	3948		6.2
						Total: 1013	28.2	6.8
						Ø5	0.0	45.3
						Ø10	180.8	0.0
						Total:	180.8	45.3



ARMAÇÃO DAS VIGAS - ELEVÇÃO:11.20 M
PARTE 01/01
ESCALA 1:50

Resumo Aço Desenho de vigas	Comp. total (m)	Peso+10% (kg)	Total
CA-50 Ø10	266.3	181	181
CA-60 Ø5	263.2	45	45
Total			226

ARMAÇÃO DAS VIGAS - ELEVÇÃO:11.20 M
PARTE 01/01
ESCALA 1:50

[illegible]